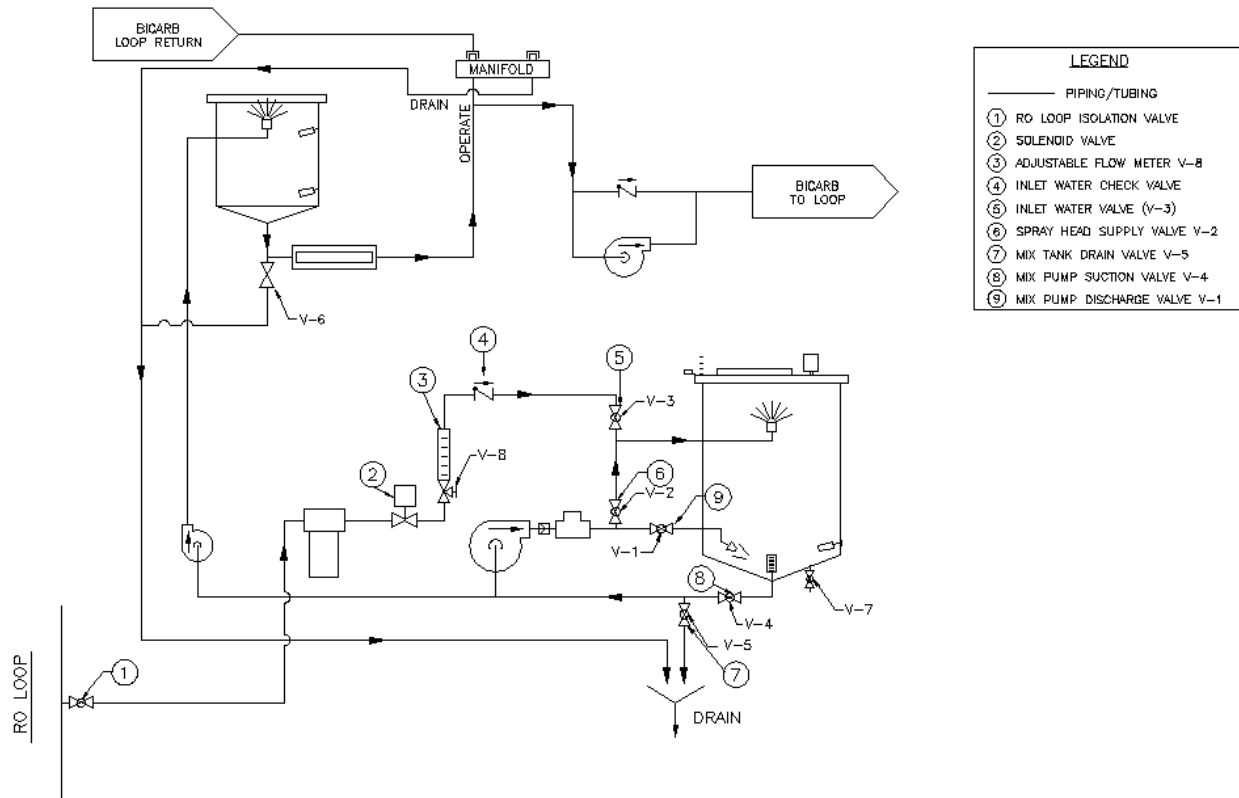


## PSDS CHECK VALVE TEST



1. OPEN valve V-3 (Inlet Water Valve)
2. OPEN valve V-2 (Mix Tank Spray Head Supply Valve)
3. OPEN valve V-1 (Mix Pump Discharge Valve)
4. OPEN valve V-4 (Mix Pump Suction Valve)
5. CLOSE valve V-5 (Mix Tank Drain Valve)
6. Turn the MIX TANK AUTO FILL switch on the controller once to START and fill the MIX TANK with approximately 25 gallons (95 L) of RO water. Once level is reached turn the MIX Tank Auto Fill switch to the START position to stop filling the Mix Tank.
7. Close the isolation valve at the RO distribution loop.
8. Open valve V-8 (located on the flow meter) completely to allow maximum flow through the flow meter.
9. Turn the MIX PUMP switch to MIX.

- 
10. On the rear of the Inlet Solenoid valve, OPEN the bleed valve. If fluid steadily flows from the bleed valve, replace the Inlet Water Check Valve. If water does not flow from the bleed valve, the Inlet Water Check Valve is operating as expected.



Bleed Valve  
on Inlet

11. Once the testing is complete. Configure the SDS unit for normal operation